

Contact Details

Before using the product, please check the guide pages at the front of this catalog.

Internet

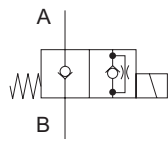
<https://www.daikinpmc.com/en/>

For latest information, PDF catalogs and operation manuals

Seat Type Solenoid Valve



JIS graphic symbols for hydraulic system



Features

- No hydraulic locking occurs even during long periods of pressurized operation

Nomenclature

※ - **JSC** - ※ **01** - **2** ※ - **10** - ※

1 2 3 4 5 6 7 8

1 Applicable fluid code

No designation: Petroleum-based hydraulic fluid
F: Phosphate ester hydraulic fluid

2 Model No.

JSC: J series seat type solenoid valve

3 Connections

G: Gasket mount type
C: Cartridge mount type

4 Nominal diameter

01: 1/8

5 Maximum operating pressure

2: 25 MPa {250 kgf/cm²}

6 Voltage code

(See the solenoid specification table)

7 Design No.

(The design No. is subject to change)

8 Option code

No designation: Lead wire type
C: DIN connector type (without lamp)
CL: DIN connector type (with lamp)

Specifications

Model No.	Nominal diameter	Maximum operating pressure MPa {kgf/cm ² }	Maximum flow rate L/min	Maximum switching frequency Times per minute	Leak amount cm ³ /min	Mass kg	
						Gasket mount type (G)	Cartridge mount type (C)
JSC-※01	1/8	25 {250}	15	240	0.25 maximum	0.97	0.27

6: Solenoid specification table

Voltage code	Power supply voltage	Starting current A	Holding current A	Holding power W	Permissible voltage fluctuation %
A	AC 100 V (50 Hz)	0.362	0.258	17	80 to 110
	AC 100 V (60 Hz)	0.318	0.208	14	90 to 121
	AC 110 V (60 Hz)	0.356	0.244	18	82 to 110
B	AC 200 V (50 Hz)	0.183	0.13	17	80 to 110
	AC 200 V (60 Hz)	0.158	0.104	14	90 to 121
	AC 220 V (60 Hz)	0.178	0.121	18	82 to 110
N	DC 12 V	-	1.48	17.8	90 to 110
P	DC 24 V	-	0.74	17.8	90 to 110

Note: The current and power indicated are the values at 20°C.

Time rating	Insulation resistance	Withstand voltage	Insulation type
Continuous	50 MΩ	AC 1500 V, 1 minute	Class B (Class H for coils)

Accessories (gasket mount type)

Hexagon socket head cap bolt	Quantity	Tightening torque N·m {kgf·cm}
M5 × 45	4	6 to 8 {60 to 80}

Contact Details

Before using the product, please check the guide pages at the front of this catalog.

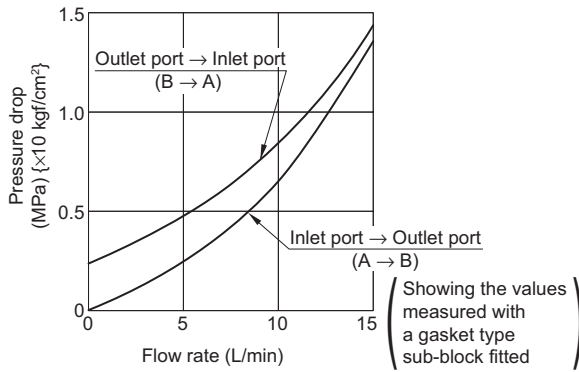
Internet

<https://www.daikinpmc.com/en/>

For latest information, PDF catalogs and operation manuals

Performance curves (viscosity: 32 mm²/s {cSt})

Pressure drop characteristics



Operation time (Sec.)

Power supply	Operating direction	Operation time Sec.
AC	Excited	0.02 to 0.03
	Demagnetized	0.02
DC	Excited	0.03
	Demagnetized	0.03 to 0.04

Note: The operation time may change slightly depending on the conditions of use (pressure, flow rate, hydraulic fluid viscosity, etc.).

Handling

● Wiring guide for solenoid (AC solenoid valve)

Solenoids can be used with both 50 and 60 Hz.

● Flow direction

- Flow A → B is blocked with the solenoid at the normal position (non-energized state), and flow B → A becomes a free flow at the cracking pressure of approximately 0.2 MPa {2 kgf/cm²}.
- Flow B → A cannot be utilized with the solenoid excited.

● Tightening torque

	Tightening torque N·m {kgf·cm}
Cartridge	66 to 70 {660 to 700}
Button bolt	3 to 4 {30 to 40}

Solenoid model codes

Details	Model code of solenoid coil
Lead wire type	C-PS-*
DIN connector type	C-PS-*-C1

Note: *: Voltage code

○ DIN connector type solenoid coils are not provided with a DIN connector socket.

○ When a DIN connector socket is required, order it from your nearest distributor, specifying the model code given in the table below.

Manufacturer: BELDEN

Model code	Power supply voltage	Details
GDM2011		Without lamp
GDML2011-LG110-H0	AC 100 V, AC 110 V	With lamp
GDML2011-LG240-H0	AC 200 V, AC 220 V	
GDML2011-2LED12-H0	DC 12 V	
GDML2011-2LED24-H0	DC 24 V	

Contact Details

Before using the product, please check the guide pages at the front of this catalog.

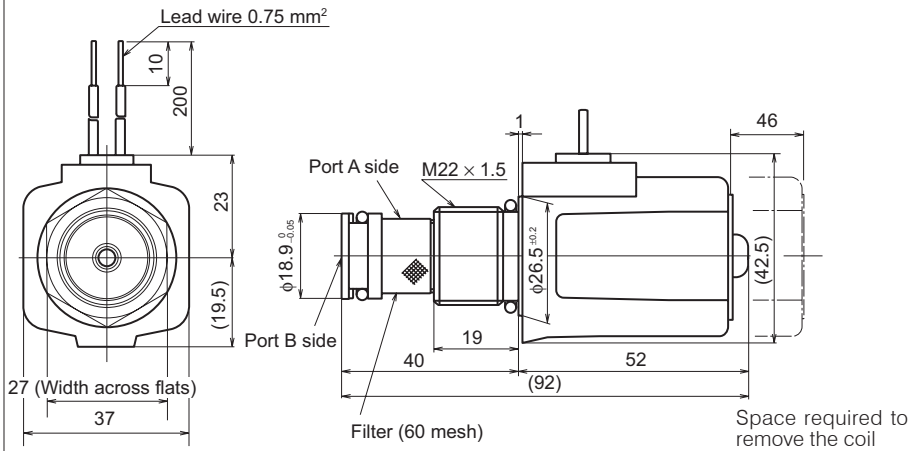
Internet

<https://www.daikinpmc.com/en/>

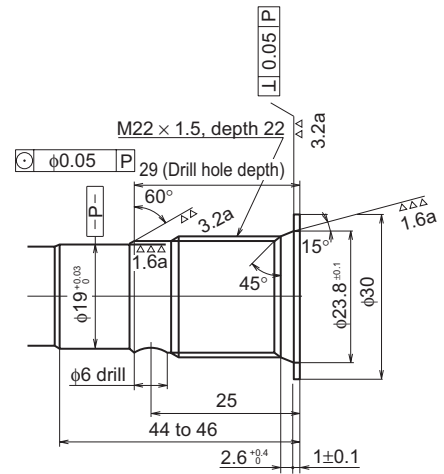
For latest information, PDF catalogs and operation manuals

External dimension diagram

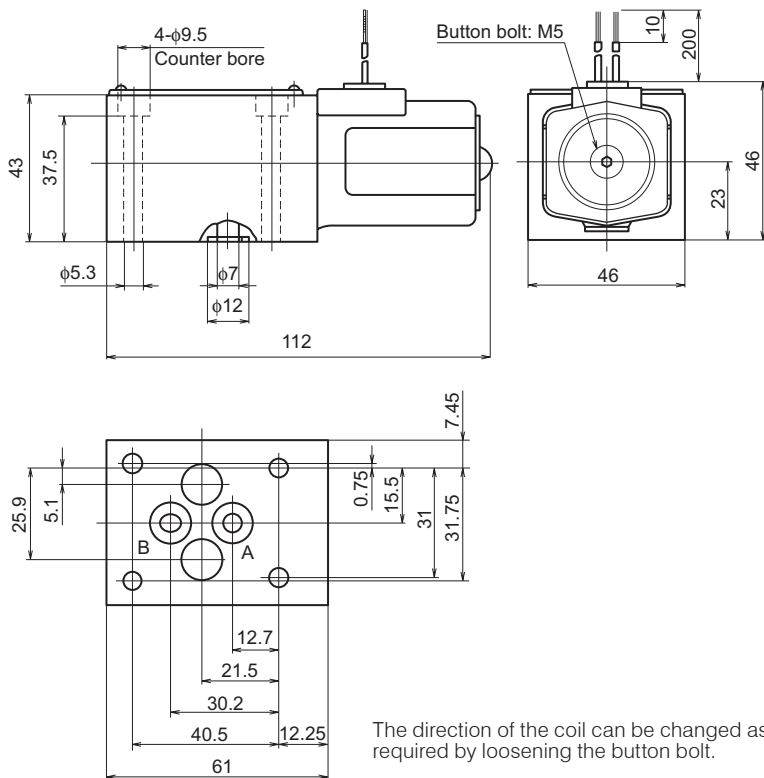
● JSC-C01-2※-10 (AC, DC)



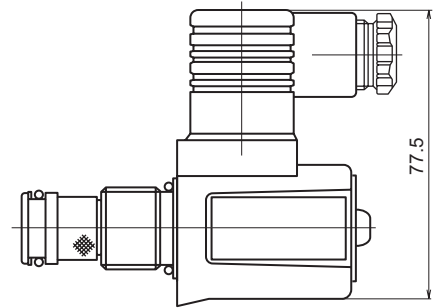
Mount dimensions



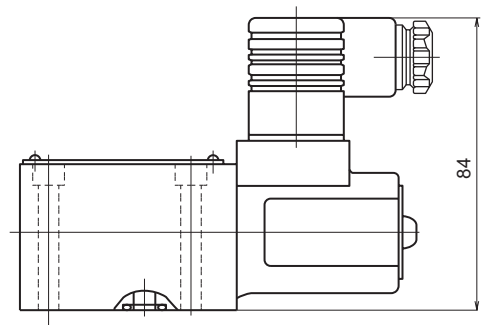
● JSC-G01-2※-10 (AC, DC)



● JSC-C01-2※-10-C (L) (Option)

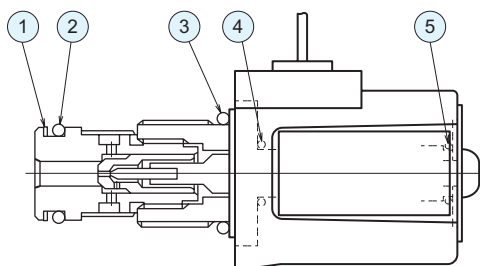


● JSC-G01-2※-10-C (L) (Option)



Sectional structural diagram

● JSC-C01



Sealing part table

Part No.	Name	Quantity	Part specifications
1	Backup ring	1	JIS B 2407 bias cut P15
2	O-ring	1	JIS B 2401 1BP15
3	O-ring	1	AS568-116 (NBR, Hs90)
4	O-ring	1	JIS B 2401 1BP12
5	O-ring	1	JIS B 2401 1BP11.2